

Regional Groups

There are several BAHT affiliated regional groups throughout the UK that meet between 2 and 4 times a year for networking, support and CPD.

[www.hand-therapy.co.uk/
health_professionals/regional_groups.aspx](http://www.hand-therapy.co.uk/health_professionals/regional_groups.aspx)

Research Grants

BAHT members, with successful application, can access up to £20k to fund a research project, audit or service evaluation. The BAHT Clinical Evidence Committee is a NIHR non-commercial partner, therefore any NIHR portfolio studies are eligible to apply for additional resources.

[www.hand-therapy.co.uk/
health_professionals/research/default.aspx](http://www.hand-therapy.co.uk/health_professionals/research/default.aspx)

Bursaries

There are several bursaries available: Conferences, Charitable and Courses (BAHT levels 1-3 and other relevant)

[www.hand-therapy.co.uk/
health_professionals/bursaries](http://www.hand-therapy.co.uk/health_professionals/bursaries)

EFSHT

The European Federation of Societies for Hand Therapy aims to co-ordinate the activities of the various European Societies for Hand Therapy; increasing and enhancing the exchange of knowledge.

www.eurohandtherapy.org

IFSHT

The International Federation of Societies for Hand Therapy represents over 10,000 therapists around the world and includes the IFSHT 'ezine'. This online magazine has clinical articles and other hand therapy related news.

www.ifsht.org

www.hand-therapy.co.uk



Keep in touch



@BAHTHandtherapy



British Association of Hand Therapists



@Baht.1984

Further information

Membership types

Full, Associate/Student, Overseas

Fees

Refer to website for details:

[www.hand-therapy.co.uk/
members/application/default.aspx](http://www.hand-therapy.co.uk/members/application/default.aspx)

Want to make a difference?

BAHT is run by volunteers serving on the Executive Committee, Education Committee, Clinical Evidence Committee and Global Partnership Committee.

Get in touch if want to discuss joining us:

bahthandtherapy@gmail.com

www.hand-therapy.co.uk



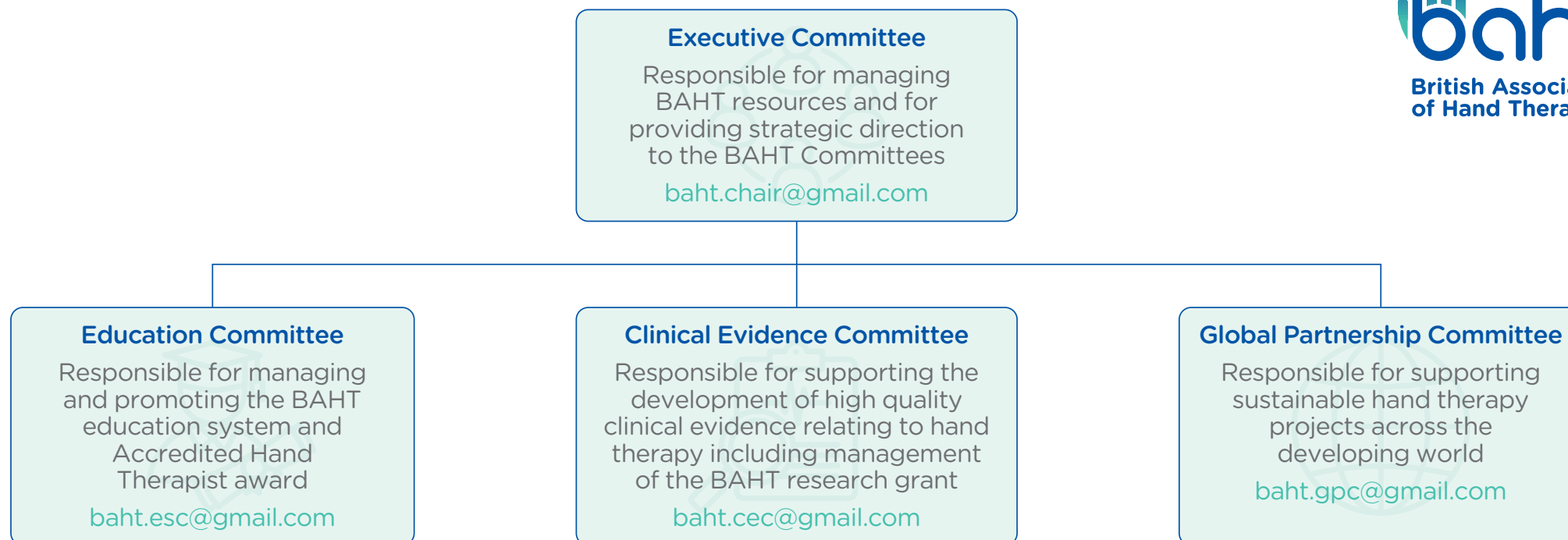
Benefits of Membership

The British Association of Hand Therapists (BAHT) is a registered UK charity and clinical interest group for

anyone interested in the rehabilitation of hands. This leaflet outlines how BAHT aims to support members in their professional development.

Please consider pinning this leaflet to your staff notice board – it folds out into a poster.





Benefits of Membership



Professional Development

Discounted courses and conferences. Online resources and guidance on becoming an accredited Hand Therapist



Networking

Regional groups and the website forum provide therapist and student opportunities to gain knowledge and experience from others*



Scientific Journal

Quarterly peer reviewed "Hand Therapy" journal and access to the IFSHT ezine*



Advanced Clinical Practice

Support and working groups for those working at, or towards, ACP



Bursaries and Grants

Available for courses, conferences and research*



News and Advertising

Regular updates and opportunity to advertise jobs and research via the monthly BAHT e-bulletin



Global Affiliations

BAHT members are automatically affiliated to EFSHT and IFSHT, putting you in touch with a world-wide network of hand therapists*